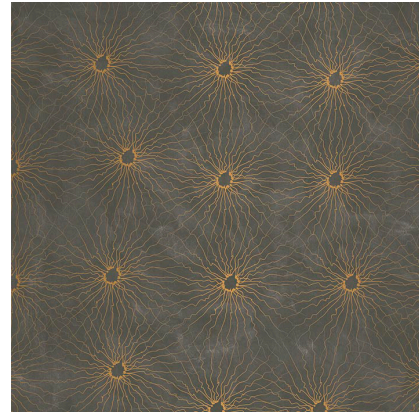


Model: SKINS PATTERN RA COAL







Codes: 100307862

Group: G-201

Format: 53X1005CM



FEATURES

-  Roll format
-  The rolls should be installed so that the pattern at end of the roll matches the pattern at the beginning of the next roll, creating a mirror effect
-  Non woven paper
-  Very good color fastness to light
-  The adhesive must be applied on the support to be decorated (gluing the wall)
-  Allows for dry removal
-  The duration of the warranty is that provided by the European Standard Warranty.
-  Can be carefully cleaned with a damp cloth

ADDITIONAL NOTES

We recommend purchasing all the wallpaper you will need in the same order and production shade, since there will be slight changes in shade between the different dyes/lots.

DIMENSIONAL FEATURES

Width	53 CM
Length	1005 CM
Thickness	259 μ

LABORATORY TESTS

Flammability	B-s1,d0	EN 13501*
Formaldehyde emissions	<120 mg/kg	UNE-EN 15102:2019*
Migration of heavy metals and specific elements	PASS	UNE-EN 15102:2019*
Vinyl chloride monomer release	PASS	UNE-EN 15102:2019*
Content of specific hazardous substances	PASS	UNE-EN 15102:2019*
Perfluorooctane sulfonic acid (pfos) and its by-products	PASS	UNE-EN 15102:2019*
Weight	147 G/M2	EN ISO 536*
Permeability to 196 pa	52.3 L/(M2*S)	ISO 9237*
Dry tensile md	4671 N/M	ISO 1924-2*
Dry tensile cd	2924.7 N/M	ISO 1924-2*
Elongation md	5.2 %	ISO 1924-2*
Elongation cd	12.2 %	ISO 1924-2*



PACKING

Sales units per box	63.918 M2/BOX	
Sales units per pallet	1917.54 M2/PAL	
Sales units per unit	5.3265 M2/PIECE	
Net weight	0.150192 KG/M2	
Sale unit	M2	
Base unit	ST	
Gross weight	0.168966 KG/M2	

